

PHASE GLAZE

CC CONE 5/6



PG-24 over AMACO White Chocolate No. 16 Clay

WHERE SURFACE SPEAKS VOLUMES

THE PHASE ADVANTAGE



Explore our products!

- Layered look with a single glaze.
- Has enough flow to create movement.
- Layers nicely with other glazes.

CATEGORY:
Mid-High Fire Glaze

FIRING TEMPERATURE:
Cone 5 - Cone 6

Tiles are AMACO A-Mix White Stoneware No. 11. All label tiles fired to Cone 5.



FOOD SAFE



SPRAYABLE

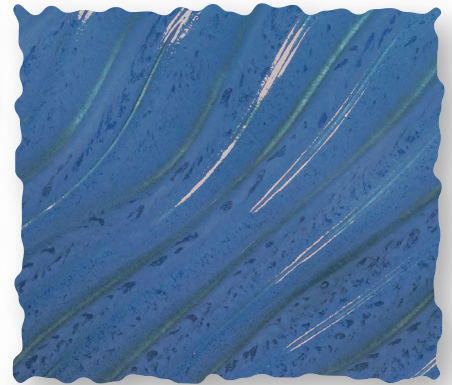
DEFINITION OF CONE TEMPERATURES

Cone 5 = 1184°C (at 150°C/hour for the final 100°C of firing) / 2201°F (at 270°F/hour in the final 200°F of firing)

Cone 6 = 1241°C (at 150°C/hour for the final 100°C of firing) / 2266°F (at 270°F/hour in the final 200°F of firing)



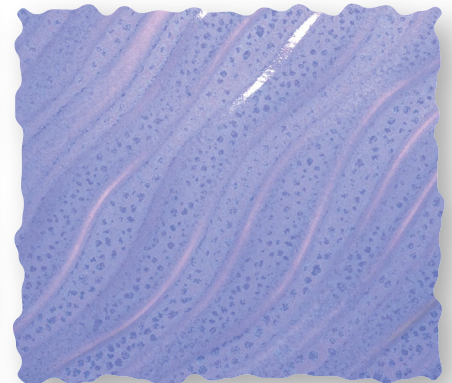
PG-54 Lunar Pink 



PG-24 Night Rain  



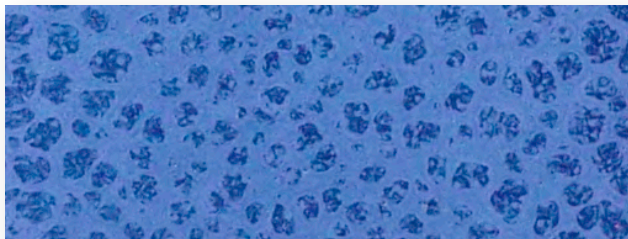
PG-42 Teal Drift 



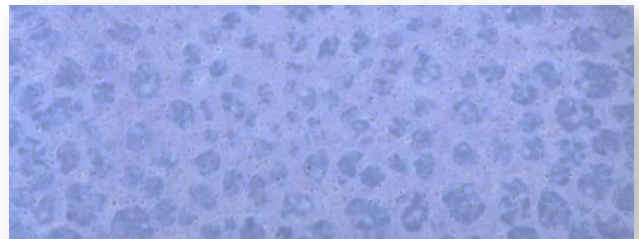
PG-55 Floating Lavender 

WHAT IS PHASE SEPARATION?

Phase separation occurs when a glass melt separates into two or more liquids of slightly different chemistry (and therefore potentially different fired appearance and physical presence). Oxides that influence color and other surface characteristics can preferentially gather in one of the phases producing variation.



Close-up image of phase separation on flat surface.
PG-24 Night Rain on AMACO 30M clay. Fired to cone 5.



Close-up image of phase separation on flat surface.
PG-55 Floating Lavender on AMACO 30M clay. Fired to cone 5.

FAQ

Apply To	Cone 04 bisque	Mixable?	YES!
Fire To	Cone 5/6	Food Safe?	All glazes are food safe
Firing Horizontally?	Increases the size of the spots upon thicker application.		
Firing Vertically?	Shows movement of glaze.		

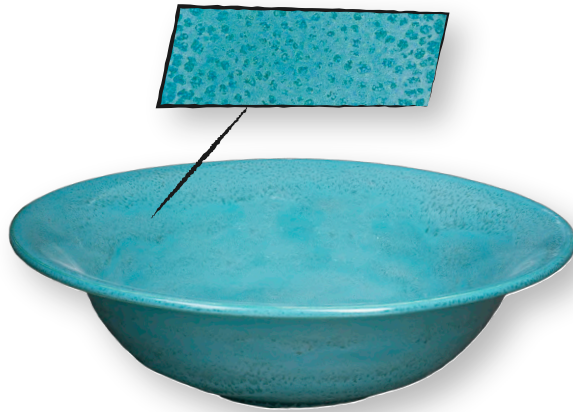
BEST FORMS AND USES

TIP: Texture holds a lot of glaze and will show more spots in the deeper recesses.



Most Pottery Forms

PG-55 Floating Lavender on AMACO White Chocolate Clay. Fired to cone 5.



Concave

PG-55 Floating Lavender on AMACO White Chocolate Clay. Fired to cone 5.



Texture

PG-24 Night Rain on AMACO White Chocolate Clay. Fired to cone 5.

APPLICATION

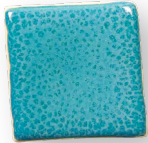
Phase glazes will show more phase separation when more glaze is applied to the surface. All tiles are on AMACO White Chocolate No.16 clay. Fired to cone 5.



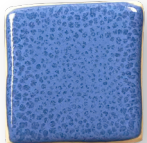
CLAY



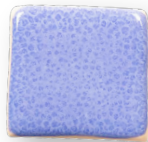
16M
White Chocolate
Premium Mid-Range Clay



PG-42
Teal Drift
over 16M clay.



PG-24
Night Rain
over 16M clay.



PG-55
Floating Lavender
over 16M clay.



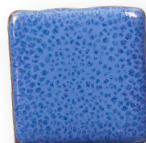
PG-54
Lunar Pink
over 16M clay.



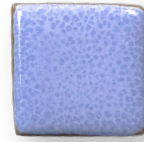
30M
Milk Chocolate
Premium Mid-Range Clay



PG-42
Teal Drift
over 30M clay.



PG-24
Night Rain
over 30M clay.



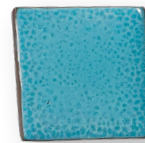
PG-55
Floating Lavender
over 30M clay.



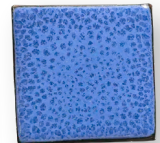
PG-54
Lunar Pink
over 30M clay.



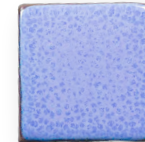
32M
Dark Chocolate
Premium Mid-Range Clay



PG-42
Teal Drift
over 32M clay.



PG-24
Night Rain
over 32M clay.



PG-55
Floating Lavender
over 32M clay.



PG-54
Lunar Pink
over 32M clay.

*All tiles fired to cone 5.

LAYERING

PG glazes layer nicely over all AMACO glazes. Tiles on AMACO A-Mix White Stoneware No.11. Fired to Cone 6.



PG-42 Teal Drift
over C-1 Obsidian
3/3 coats



PG-24 Night Rain over
PC-17 Honey Flux
2/2 coats



PG-55 Floating Lavender
over SM-11 White
3/3 coats



PG-54 Lunar Pink
over C-1 Obsidian
3/3 coats



WANT MORE?

Visit our 5/6 glaze forum at
[Facebook.com/groups/potterschoiceex](https://www.facebook.com/groups/potterschoiceex) to find inspiration,
share results, and discuss with other AMACO customers!



amaco.com



[@amacobrent](https://www.instagram.com/amacobrent)



[@amaco_brent](https://www.tiktok.com/@amaco_brent)